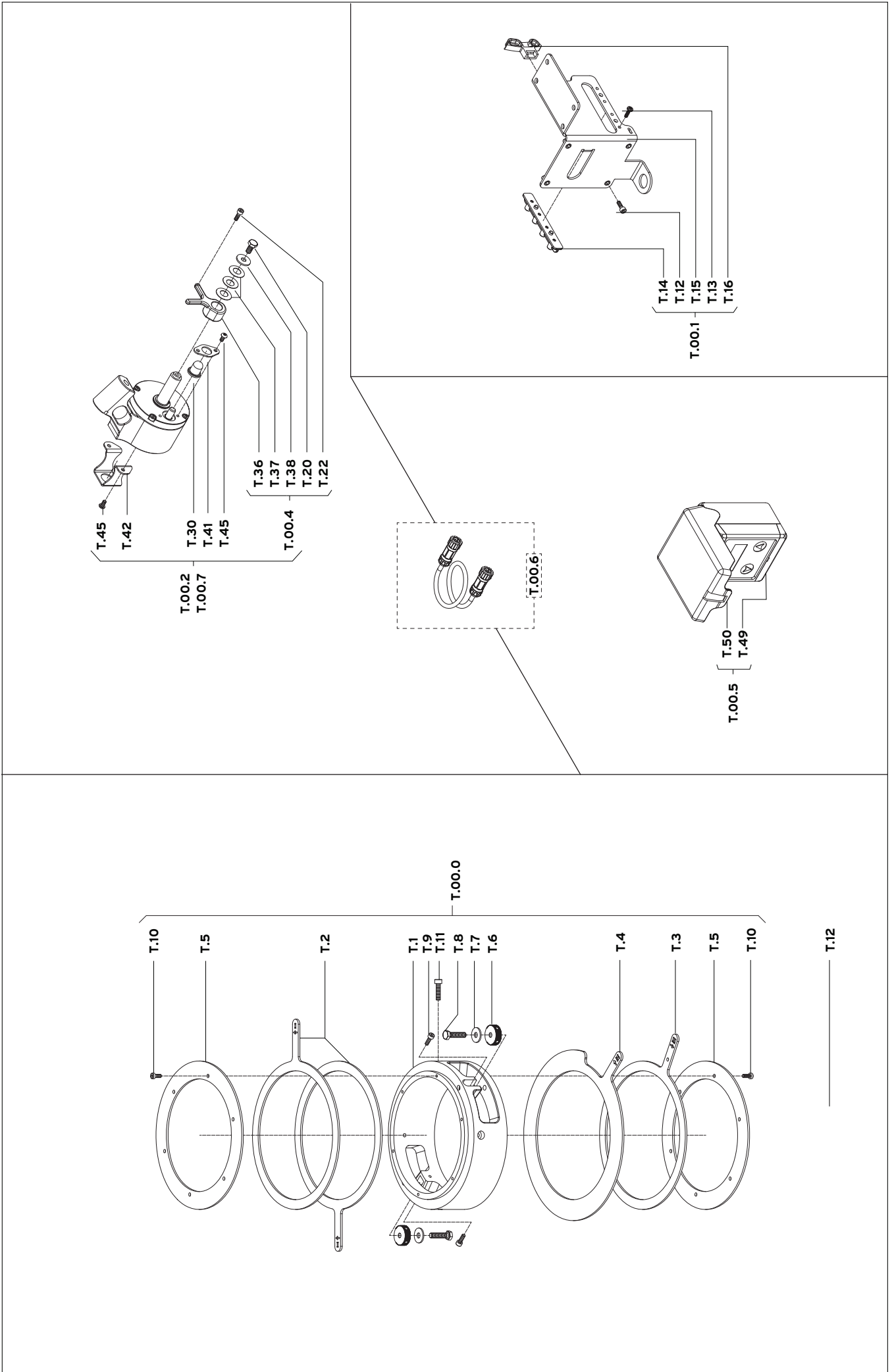


Spare Parts | Inverter 160



Spare Parts | Inverter 160

| | ENGLISH Description | DEUTSCH Bezeichnung | ITALIANO Denominazione | FRANCAIS Désignation | Q.ty Stk. Q.tà Q.té | Part Number Artikel-Nummer Codice Articolo Référence Pièce |
|--------|------------------------------------|------------------------------------|---|---------------------------------------|--|---|
| T.00.0 | Kit Trip Stop Ring | Kit Sektoring | Kit Anello Settore | Kit Anneau Secteur | 1 | 07010849 |
| T.1 | Ring for Clamping Screws CP | Ring für Klemmschrauben CP | Anello per Viti Di Fissaggio CP | Bague pour Vis de Serrage CP | 1 | 04010822 |
| T.2 | Sector Ring | Sektoring | Anello Settore | Anneau Secteur | 2 | 02010681 |
| T.3 | Sector Ring | Sektoring | Anello Settore | Anneau Secteur | 1 | 02010686 |
| T.4 | Sector Ring | Sektoring | Anello Settore | Anneau de Secteur | 1 | 02010682 |
| T.5 | Retaining Ring | Haltering | Anello di Ritegno | Anneau de Retenue | 2 | 02010660 |
| T.6 | Knurled Nut M6/Ø24 with Hole | Rändelmutter M6/Ø24 mit Loch | Dado Zigrinato M6/Ø24 con Foro | Ecrou Moleté M6/Ø24 avec Trou | 2 | 04010814 |
| T.7 | Washer 6.5 | Scheibe 6.5 | Rondella 6.5 | Rondelle 6.5 | 2 | 02010160 |
| T.8 | Bolt M6x25 | Schraube M6x25 | Vite M6x25 | Vis M6x25 | 2 | 02010230 |
| T.9 | Bolt M4x12 | Schraube M4x12 | Vite M4x12 | Vis M4x12 | 2 | 02010631 |
| T.10 | Bolt M4x10 | Schraube M4x10 | Vite M4x10 | Vis M4x10 | 12 | 02010665 |
| T.11 | Bolt M5x20 | Schraube M5x20 | Vite M5x20 | Vis M5x20 | 4 | 02010326 |
| T.00.1 | Kit Stopper for Rod | Kit Anschlag Sektorwelle | Kit Arreto Asta Settore | Kit Buttee Tige Secteur | 1 | 07010845 |
| T.12 | Bolt M4x12 | Schraube M4x12 | Vite M4x12 | Vis M4x12 | 4 | 02010631 |
| T.13 | Screw E.J-PT 35x12 | Schraube E.J-PT 35x12 | Vite E.J-PT 35x12 | Vis E.J-PT 35x12 | 4 | 02010659 |
| T.14 | Slide for Sector Shaft | Gleitstück Sektorstange | Scorrimento Per Perno Settore | Glissière pour Pivot Secteur | 1 | 04010813 |
| T.15 | Sector Stop Plate with Nut | Sektoranschlagblech mit Mutter | Piastra Arresto Sett. con Dado | Plaque D'arrêt Secteur a/Écrou | 1 | 02010661 |
| T.16 | Insert for Full Circle Function | Einsatz für Kreisfunktion | Inserto per Funz.to Circolare | Insert pour Fonction Circulaire | 1 | 04010812 |
| T.00.2 | Kit Trip Lever 24 | Kit Schalthebel 24 | Kit Leva Scatto Settore 24 | Kit Levier Declenchement 24 | 1 | 07010850 |
| T.00.4 | Kit Fork for Trip Lever | Kit Gabel Sektorfinger | Kit Forcella Leva Scatto Settore | Kit Embranchement pour Levier | 1 | 07010854 |
| T.17 | Housing for Sector Lever CP | Sektorfinger Gehäuse CP | Corpo Leva Settore CP | Corps de Levier Declench. CP | 1 | 04010819 |
| T.18 | Cover Sector Lever Housing CP | Deckel Sektorfinger Gehäuse CP | Coperchio Corpo Leva Sett. CP | Couvercle Corps Lev. Decl. CP | 1 | 04010931 |
| T.19 | Shaft with Cam Disc | Welle mit Kurvenscheibe | Perno con Disco a Camma | Pivot avec Disque à Cames | 1 | 04010929 |
| T.20 | Bolt M6x12 | Schraube M6x12 | Vite M6x12 | Vis M6x12 | 1 | 02010382 |
| T.21 | Permanent Electromagnet | Permanentelektromagnet | Elettromagnete Permanente | Électroaimant Permanent | 1 | 02010612 |
| T.22 | Bolt M4x12 | Schraube M4x12 | Vite M4x12 | Vis M4x12 | 5 | 02010631 |
| T.23 | Tension Spring | Zugfeder | Molla a Trazione | Ressort de Traction | 1 | 02010627 |
| T.24 | Magnetic Head | Magnet Kopf | Magnete | Tête Magnétique | 1 | 04010820 |
| T.25 | Slotted Screw M4x8 | Schraube mit Schlitz M4x8 | Vite Taglio Cacciavite M4x8 | Vis Fendue M4x8 | 2 | 02010663 |
| T.27 | Retaining Strap | Halteleiste | Linguetta Di Fissaggio | Languette de Maintien | 1 | 04010834 |
| T.29 | O-Ring 59X1.5 | O-Ring 59X1.5 | O-Ring 59X1.5 | O-Ring 59X1.5 | 1 | 02010629 |
| T.30 | Rubber Cap | Gummiabdeckung | Cappuccio in Gomma | Capuchon en Caoutchouc | 1 | 04010811 |
| T.31 | Pin | Zylinderstift | Pernetto Cilindrico | Chevilles | 1 | 02010669 |
| T.32 | Compression Spring | Druckfeder | Molla a Compressione | Ressort de Compression | 2 | 02010620 |
| T.33 | O-Ring 11X1.5 | O-Ring 11X1.5 | O-Ring 11X1.5 | O-Ring 11X1.5 | 2 | 02010630 |
| T.34 | Bushing | Gleitlager | Boccola | Roulement | 1 | 02010628 |
| T.35 | Bolt M4x10 | Schraube M4x10 | Vite M4x10 | Vis M4x10 | 1 | 02010665 |
| T.36 | Sector Lever | Sektorfinger | Leva Settore | Levier Declenchement | 1 | 04010782 |
| T.37 | Washer Spring | Tellerfeder | Molla a Tazza | Rondelle Belleville | 3 | 02010662 |
| T.38 | Washer 6.5 | Scheibe 6.5 | Rondella 6.5 | Rondelle 6.5 | 1 | 02010160 |
| T.39 | Pin | Zylinderstift | Pernetto Cilindrico | Chevilles | 1 | 02010670 |
| T.40 | Countersunk Screw M4x8 | Senkkopfschraube M4x8 | Vite Testa Svasata M4x8 | Vis a Tete Noyee M4x8 | 2 | 02010697 |
| T.41 | Support Plate for Rubber Cap | Halteblech Gummiabdeckung | Piastra Supporto per Cappuccio | Plaque Support pour Capuchon | 1 | 02010625 |
| T.42 | Plug Protection Plate | Steckerschutzblech | Piastra di Protezione Spina | Plaque Protection du Bouchon | 1 | 02010704 |
| T.43 | O-Ring 3X1.5 | O-Ring 3X1.5 | O-Ring 3X1.5 | O-Ring 3X1.5 | 1 | 02010705 |
| T.44 | Bolt with Washer M3x10 | Schraube mit Scheibe M3x10 | Vite con Rondella M3x10 | Vis avec Rondelle M3x10 | 1 | 02010706 |
| T.45 | Panhead Screw M4x8 | Linsenkopfschraube M4x8 | Vite a Testa Tonda M4x8 | Vis à Tête Fraisée M4x8 | 4 | 02010707 |
| T.46 | M12 2-Pin Female Connector | M12 2-Polige Buchse | M12 Connettore 2-Pin | M12 2-Pin Connecteur Femelle | 1 | 02010709 |
| T.47 | Silicagel Bag | Silicagel Säckchen | Sacchetto Silicagel | Sachet Silicagel | 1 | 02010711 |
| T.48 | Bolt M12x1 | Mutter M12x1 | Dado M12x1 | Ecrou M12x1 | 1 | 02010713 |
| T.00.5 | Kit Control Unit with Cover | Kit Steuerung mit Abdeckung | Kit Centralina con Coperchio | Kit Unite de Comm. a/Couvercle | 1 | 07010847 |
| T.49 | Control Unit | Steuerung | Centralina | Unite de Commande | 1 | 02010671 |
| T.50 | Cover for Control Unit | Klappe für Steuerung | Coperchio per Centralina | Couvercle pour Unite Commande | 1 | 04010839 |
| T.51 | Silicagel Bag | Silicagel Säckchen | Sacchetto Silicagel | Sachet Silicagel | 1 | 02010711 |
| T.00.6 | Kit Cable w/Connector | Kit Kabel mit Stecker | Kit Cavo Spina su Ambo i Lati | Kit Câble avec Connectuer | 1 | 07010848 |
| T.52 | Bolt M12x1 | Mutter M12x1 | Dado M12x1 | Ecrou M12x1 | 1 | 02010713 |
| T.53 | M12 2 Pin Male Connector | M12 2 Poliger Stecker | M12 Spina a 2 Poli | Connecteur M12 2 Pôles | 2 | 02010710 |
| T.54 | Silicone Cable 2 Poles | Silikonkabel 2 Polig | Cavo in Silicone a 2 Poli | Câble Silicone 2 Pôles | 1 | 02010712 |
| T.00.7 | Kit Trip Lever 21 | Kit Schalthebel 21 | Kit Leva Scatto Settore 21 | Kit Levier Declenchement 21 | 1 | 07010907 |

